



VEE TWO AUSTRALIA

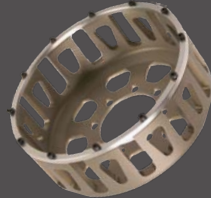
STOCK TAKE SALE 30% OFF LISTED ITEMS



Easy Pull Clutch Slave Cylinder V2-12-225

Replaces stock DUCATI clutch slave cylinder. Reduces lever effort 25%. Made from 6061-T6 Alum., anodized clear for corrosion resistance.

RRP ~~\$125.00~~ **\$87.50**



DUCATI - Aluminum Clutch Basket for all Belt models V2-04-525

Aluminum Clutch Basket. 440gr. 683gr. lighter than standard issue steel.
FOR A FREE REVVING ENGINE!

RRP ~~\$152.00~~ **\$106.40**



DUCATI - Assorted Cams for Bevel and Belt

VEE TWO performance camshafts are the result of 25 years of continuous Torque, Road&Track and Race Cam development. Our Cams are made of the best available materials and hardening finishes. Designed for performance and durability.

RRP ~~\$718.75~~ **\$503.00**



BEVEL GEARBOXES -Standard Ratio Gearbox. -Mille Gearbox. -Close Ratio Gearbox.

Material: Steel, case hardened to Rockwell 60/64
Advantages: Allows a closer shift between 1st 2nd and 3rd gears. This is an advantage specially for race bikes.

Standard Ratio
RRP ~~\$2250~~ **\$1575.00**
Close Ratio
RRP ~~\$2450~~ **\$1715.00**



Cam Pulley

Material: Billet Aluminum
Advantages: Allows the cam timing to be set for each individual camshaft, independent of crank angle. Enables you to obtain proper cam timing easily and quickly.

RRP ~~\$121.45~~ **\$85.00**



Kick Start Assembly V2-12-500

Suits 750S & 750SS
Material: Steel, heat treated and 3x chrome plated.
Advantages: Will fit all round case bevel twins, but will require the relocation of foot controls when fitting to GT models.

Kick Start Assy.
RRP ~~\$620.00~~ **\$434.00**

Contact details

Web address: www.veetwo.net

Email: sales@veetwo.net

Ph +61 (0)8 9262 7277

Fx: +61 (0)8 9262 7288

SALE ENDS MAY 31

OR WHILE STOCKS LAST

Price Disclaimer: Prices are correct at the time of printing (E&OE). Vee Two reserves the right to change prices without notice. Prices quoted are ex Vee Two factory, Perth Western Australia and exclude all taxes, duties and freight charges.



VEE TWO AUSTRALIA

STOCK TAKE SALE 30% OFF LISTED ITEMS

- Camshaft - V2-03-001 - Bevel - Road/Track, Desmo 250/350/450 - RRP ~~\$462,00~~ \$323,40
Camshaft - V2-03-002 - Bevel - Road/Track, Springer 250/350/450 - RRP ~~\$462,00~~ \$323,40
Camshaft Kit - V2-03-051 - Bevel - Torque, Springer 860/900 - RRP ~~\$760,65~~ \$532,46
Camshaft Kit - V2-03-052 - Bevel - Track, Springer 750/900 - RRP ~~\$760,65~~ \$532,46
Camshaft Kit - V2-03-053 - Bevel - Road/Track, Square Case Desmo 750/900/1000 - RRP ~~\$718,75~~ \$503,13
Camshaft Kit - V2-03-054 - Bevel - Road/Track, Round Case Desmo 750 - RRP ~~\$718,75~~ \$532,46
Camshaft Kit - V2-03-055-059 - Bevel - for various models, please call for info - RRP ~~\$718,75~~ \$503,13
Camshaft Kit - V2-03-210-301 - 2V Belt - for various models, please call for info - RRP ~~\$718,75~~ \$503,13
Camshaft Kit - V2-03-604 - 4V Belt - Torque - Drop In - all 4V non Testastretta - RRP ~~\$1399,00~~ \$979,30
Camshaft Kit - V2-03-604A/S - 4V Belt - Torque - Drop In **Inlet/Exhaust** - all 4V non Testastretta - RRP ~~\$718,75~~ \$503,13
Camshaft Kit - V2-03-606 - Belt - 4V Track - Drop In - all 4V non Testastretta - RRP ~~\$1399,00~~ \$979,30
Camshaft Kit - V2-03-606A/S - Belt - 4V Track - Drop In **Inlet/Exhaust** - all 4V non Testastretta - RRP ~~\$718,75~~ \$503,13
Camshaft Kit - V2-03-607 - Belt - 4V Road/Track - Drop In - all 4V non Testastretta - RRP ~~\$1399,00~~ \$979,30
Camshaft Kit - V2-03-607A/S - Belt - 4V Road/Track - Drop In **Inlet/Exhaust** - all 4V non Testastretta - RRP ~~\$718,75~~ \$503,13
Primary Gears&Clutch - V2-04-001-002 - Bevel - for various models, please call for info - RRP ~~\$594,60~~ \$416,22
Primary Gears - V2-04-057 - Bevel - Straight cut 36/69 900MHR/1000MHR - RRP ~~\$1123,10~~ \$786,17
ClutchBasket - V2-04-058 - Bevel - 900MHR/Mille - RRP ~~\$445,20~~ \$311,64
Clutch Hub - V2-03-059 - Bevel - 900MHR/Mille - RRP ~~\$434,70~~ \$304,29
Clutch Hub - V2-03-060-064 - Bevel - for various models, please call for info - RRP ~~\$367,50~~ \$257,25
Clutch Push Rod Bullet - V2-04-065 - Bevel - all Twins - RRP ~~\$12,00~~ \$8,40
Clutch Push Rod - V2-03-066 - Bevel - all Twins - RRP ~~\$15,00~~ \$10,50
Sprag Clutch Upgrade Kit - V2-04-076-205 - Bevel - for various models, please call for info - RRP ~~\$462,45~~ \$323,72
Clutch Basket - V2-04-206 - Bevel - Steel, 750/906Paso - RRP ~~\$367,60~~ \$979,30
Clutch Slave Cylinder - V2-04-228 - Belt/Bevel - all 6-Speed - RRP ~~\$125,00~~ \$87,50
Primary Gears - V2-04-230 - Belt - straight cut 748/900/916/996 - RRP ~~\$1222,00~~ \$855,54
Clutch Basket with Support Ring - V2-04-525 - Belt - Aluminum 748-1098 - RRP ~~\$152,00~~ \$106,40
Clutch Basket - V2-04-526 - Belt - Steel, 748-1098 - RRP ~~\$124,85~~ \$87,40
Main Bearing Sleeves - V2-06-100 - Bevel - 87.00mm(blank) all Twins - RRP ~~\$126,00~~ \$88,20
Main Bearing Sleeves - V2-06-101 - Bevel - Custom Finished all Twins - RRP ~~\$147,00~~ \$102,90
ClutchBasket - V2-04-058 - Bevel - 900MHR/Mille - RRP ~~\$445,20~~ \$311,64
Clutch Hub - V2-03-059 - Bevel - 900MHR/Mille - RRP ~~\$434,70~~ \$304,29
Clutch Hub - V2-03-060-064 - Bevel - for various models, please call for info - RRP ~~\$367,50~~ \$257,25
Clutch Push Rod Bullet - V2-04-065 - Bevel - all Twins - RRP ~~\$12,00~~ \$8,40
Clutch Push Rod - V2-03-066 - Bevel - all Twins - RRP ~~\$15,00~~ \$10,50
Sprag Clutch Upgrade Kit - V2-04-076-205 - Bevel - for various models, please call for info - RRP ~~\$462,45~~ \$323,72
Clutch Basket - V2-04-206 - Bevel - Steel, 750/906Paso - RRP ~~\$367,60~~ \$979,30
Clutch Slave Cylinder - V2-04-228 - Belt/Bevel - all 6-Speed - RRP ~~\$125,00~~ \$87,50
Primary Gears - V2-04-230 - Belt - straight cut 748/900/916/996 - RRP ~~\$1222,00~~ \$855,54
Clutch Basket with Support Ring - V2-04-525 - Belt - Aluminum 748-1098 - RRP ~~\$152,00~~ \$106,40
Clutch Basket - V2-04-526 - Belt - Steel, 748-1098 - RRP ~~\$124,85~~ \$87,40
Valve Guides - V2-10-101-606 - Bevel/Belt - various sizes & models, please call for info - RRP ~~\$29,95~~ \$20,97
Valve Seats - V2-11-100-103 - Bevel - various sizes & models, please call for info - RRP ~~\$59,45~~ \$41,62
Valve Seats - V2-11-204-207 - Bevel - various sizes & models, please call for info - RRP ~~\$45,00~~ \$31,50
Valves - V2-13-051-208 - Bevel/Belt - various sizes & models, please call for info - RRP ~~\$65,50~~ \$45,85
Valves - V2-13-601-616 -Belt - various sizes & models, please call for info - RRP ~~\$75,50~~ \$52,85

Contact details

Web address: www.veetwo.net

Email: sales@veetwo.net

Ph +61 (0)8 9262 7277

Fx: +61 (0)8 9262 7288

SALE ENDS MAY 31

OR WHILE STOCKS LAST

Price Disclaimer: Prices are correct at the time of printing (E&OE). Vee Two reserves the right to change prices without notice. Prices quoted are ex Vee Two factory, Perth Western Australia and exclude all taxes, duties and freight charges.



VEE TWO AUSTRALIA

STOCK TAKE SALE 30% OFF LISTED ITEMS

- Gear Boxes - V2-08-100 - Bevel - Complete Assembly, 3/Dog for all Twins - RRP ~~\$2250,00~~ \$1575,00
- Gear Boxes - V2-08-100C - Bevel - Complete Assembly, 3/Dog 1,2&3 Close Ratio for all Twins - RRP ~~\$2450,00~~ \$1715,00
- Gear Boxes - V2-08-100M - Bevel - Complete Assembly, 3/Dog Mille - RRP ~~\$2250,00~~ \$1575,00
- Gear Boxes - V2-08-101 - Bevel - Slider, 1st Gear 3/Dog for all Twins - RRP ~~\$171,75~~ \$120,23
- Gear Boxes - V2-08-102 - Bevel - Layshaft, 1st Gear 34 Tooth 3/Dog for all Twins - RRP ~~\$297,30~~ \$208,11
- Gear Boxes - V2-08-102B - Bevel - Bushing, 1st Gear Layshaft for all Twins - RRP ~~\$46,25~~ \$32,38
- Gear Boxes - V2-08-103 - Bevel - Layshaft, 2nd Gear 30 Tooth 3/Dog for all Twins - RRP ~~\$130,85~~ \$91,60
- Gear Boxes - V2-08-104 - Bevel - Layshaft, 2nd Gear 30 Tooth 6/Dog for all Twins - RRP ~~\$138,75~~ \$97,13
- Gear Boxes - V2-08-105 - Bevel - Mainshaft, 3rd Gear 27 Tooth 3/Dog for all Twins - RRP ~~\$297,30~~ \$208,11
- Gear Boxes - V2-08-106 - Bevel - Mainshaft, 3rd Gear 27 Tooth 6/Dog for all Twins - RRP ~~\$303,90~~ \$212,73
- Gear Boxes - V2-08-107 - Bevel - Layshaft, 3rd Gear 26 Tooth 3/Dog for all Twins - RRP ~~\$297,30~~ \$208,11
- Gear Boxes - V2-08-108 - Bevel - Layshaft, 3rd Gear 26 Tooth 6/Dog for all Twins - RRP ~~\$303,90~~ \$212,73
- Gear Boxes - V2-08-109 - Bevel - Mainshaft, 4th Gear 30 Tooth 3/Dog Box only. for all Twins - RRP ~~\$521,90~~ \$365,33
- Gear Boxes - V2-08-110 - Bevel - Mainshaft, 4th Gear 30 Tooth 6/Dog Box only. for all Twins - RRP ~~\$528,70~~ \$370,09
- Gear Boxes - V2-08-111 - Bevel - Layshaft, 4th Gear 24 Tooth for all Twins - RRP ~~\$138,75~~ \$97,13
- Gear Boxes - V2-08-112 - Bevel - Mainshaft, 5th Gear 31 Tooth 3/Dog for all Twins - RRP ~~\$297,30~~ \$208,11
- Gear Boxes - V2-08-113 - Bevel - Mainshaft, 5th Gear 31 Tooth 6/Dog for all Twins - RRP ~~\$297,30~~ \$208,11
- Gear Boxes - V2-08-114 - Bevel - Layshaft, 5th Gear 22 Tooth 3/Dog for all Twins - RRP ~~\$251,05~~ \$175,74
- Gear Boxes - V2-08-115 - Bevel - Layshaft, 5th Gear 22 Tooth 6/Dog Wide 750GT/early 860 - RRP ~~\$284,05~~ \$198,84
- Gear Boxes - V2-08-116 - Bevel - Layshaft, 5th Gear 22 Tooth 6/Dog Wide for all Twins - RRP ~~\$284,05~~ \$198,84
- Gear Boxes - V2-08-117 - Bevel - Mainshaft, 19/24 Tooth for all Twins all Twins - RRP ~~\$654,05~~ \$457,84
- Gear Boxes - V2-08-118 - Bevel - Layshaft, 3&6/Dog for all Twins - RRP ~~\$281,00~~ \$196,70
- Gear Boxes - V2-08-120 - Bevel - Mainshaft, 19/24 Tooth suits Standard Bevel Gears only. Mille - RRP ~~\$654,05~~ \$457,84
- Gear Boxes - V2-08-121 - Bevel - Mainshaft, 17/22 Tooth suits Standard Mille Gears only. Mille - RRP ~~\$654,05~~ \$457,84
- Gear Boxes - V2-08-180 - Bevel - Layshaft, 1st Gear 31 Tooth Close Ratio for all Twins - RRP ~~\$297,30~~ \$208,11
- Gear Boxes - V2-08-181 - Bevel - Layshaft, 2nd Gear 29 Tooth Close Ratio for all Twins - RRP ~~\$130,85~~ \$91,60
- Gear Boxes - V2-08-182 - Bevel - Layshaft, 3rd Gear 25 Tooth Close Ratio for all twins - RRP ~~\$297,30~~ \$208,11
- Gear Boxes - V2-08-183 - Bevel - Mainshaft, 3rd Gear 28 Tooth CClose Ratio for all Twins - RRP ~~\$303,90~~ \$212,73
- Gear Boxes - V2-08-184 - Bevel - Mainshaft, 1,2&3 Gear 22/25 Tooth Close Ratio for all Twins - RRP ~~\$654,05~~ \$457,84
- Gear Boxes - V2-08-185 - Bevel - Mainshaft, Standard 1st & Close Ratio 2nd 19/25 Tooth for all Twins - RRP ~~\$654,05~~ \$457,84
- Gear Boxes - V2-08-188 - Bevel - Kickshaft, Gear 34 Tooth CClose Ratio for all Twins (excl.Mille) - RRP ~~\$324,35~~ \$227,05
- Gear Boxes - V2-08-189 - Bevel - Kickstart, Gear 35 Tooth Mille - RRP ~~\$324,35~~ \$227,05
- Gear Boxes - V2-08-205 - Belt - Layshaft, 5th Gear 24 Tooth CClose Ratio 748 to S4 - RRP ~~\$367,50~~ \$257,25
- Gear Boxes - V2-08-206 - Belt - Mainshaft, 5th Gear 23 Tooth Close Ratio 748 to S4 - RRP ~~\$174,40~~ \$122,08
- Gear Boxes - V2-08-207 - Belt - Mainshaft, 6th Gear 24 Tooth Close Ratio 748 to S4 - RRP ~~\$145,35~~ \$101,75
- Gear Boxes - V2-08-208 - Belt - Mainshaft, 6th Gear 23 Tooth Close Ratio 748 to S4 - RRP ~~\$198,20~~ \$138,74
- Gear Boxes - V2-08-225 - Belt - Layshaft, 5th Gear 23 Tooth 851 to ST4 - RRP ~~\$158,55~~ \$110,99
- Gear Boxes - V2-08-226 - Belt - Mainshaft, 5th Gear 24 Tooth 851 to ST4 - RRP ~~\$112,30~~ \$78,61
- Gear Boxes - V2-08-227 - Belt - Mainshaft, 6th Gear 28 Tooth 851 to ST4 - RRP ~~\$138,75~~ \$97,13
- Gear Boxes - V2-08-228 - Belt - Layshaft, 6th Gear 24 Tooth 851 to ST4 6th Gear - RRP ~~\$171,75~~ \$120,23

Contact details

Web address: www.veetwo.net

Email: sales@veetwo.net

Ph +61 (0)8 9262 7277

Fx: +61 (0)8 9262 7288

SALE ENDS MAY 31

OR WHILE STOCKS LAST

Price Disclaimer: Prices are correct at the time of printing (E&OE). Vee Two reserves the right to change prices without notice. Prices quoted are ex Vee Two factory, Perth Western Australia and exclude all taxes, duties and freight charges.



VEE TWO AUSTRALIA

STOCK TAKE SALE 30% OFF LISTED ITEMS

- Breather Tower - V2-12-051 - Bevel - all Singels and Twins - RRP ~~\$125,50~~ **\$87,85**
Oil Filter Cap - V2-12-052 - Bevel - all Singles and Twins- RRP ~~\$99,10~~ **\$69,37**
Oil Pump - V2-12-053 - Bevel - Square Case - RRP ~~\$640,80~~ **\$448,56**
Oil Pump - V2-12-054 - Bevel - Round Case - RRP ~~\$640,80~~ **\$448,56**
Gear Gazer - V2-12-055/056 - Bevel - all Twins/all Singles - RRP ~~\$125,50~~ **\$87,85**
Inspection Plugs - V2-12-060 - Bevel/Belt - all Models - RRP ~~\$19,75~~ **\$13,83**
Dip Stick - V2-12-061 - Bevel - all Twins - RRP ~~\$25,00~~ **\$17,50**
Drain Screen Insert - V2-12-065/066 - Bevel - Round Case/Square Case(Round Case if using SquareFilter) - RRP ~~\$19,95~~ **\$13,97**
Breather Tower - V2-12-201 - Belt - all Models - RRP ~~\$95,50~~ **\$66,85**
Oil Pump Drive Gear - V2-12-207/208 - Bevel - Round Case 750 / Mille - RRP ~~\$155,00~~ **\$108,50**
Lower Bevel Gear Git - V2-12-223 - Bevel - Round Case - RRP ~~\$695,00~~ **\$486,50**
Seal Kit for CLutch Slaves - V2-12-225:3 - Belt - for V2-04-227/228 - RRP ~~\$24,85~~ **\$17,40**
Gland Nut - V2-12-301 - Bevel/Belt - Crankcase & Side Cover for all models - RRP ~~\$25,00~~ **\$17,50**
Oil Filler Plug - V2-12-302 - Bevel/Belt - for all models - RRP ~~\$19,95~~ **\$13,97**
Kick Start Lever - V2-12-500 - Bevel - Round Case 750S/SS - RRP ~~\$620,00~~ **\$434,00**
Cam Pulley - V2-12-699/700 - Belt - 748R only (wide Belt) / all 2V & 4V (excl. 748/DS/Testastretta) - RRP ~~\$121,45~~ **\$85,02**
Cam Pulley Nut - V2-12-700:4 - Belt - Hexagon Type - RRP ~~\$13,25~~ **\$9,28**
Cam Pulley - V2-12-701 - Belt - adjustable, early 2V - RRP ~~\$121,45~~ **\$85,02**
Lambda Plug - V2-12-950 - Bevel/Belt - all models - RRP ~~\$29,40~~ **\$20,58**
Lambda Plug Fitting - V2-12-951/952 - Bevel/Belt - Weld-on, Stainless Steel/Mild Steel for all models - RRP ~~\$18,00~~ **\$12,60**
- Big Ends - V2-15-100-106 - Bevel - for various models, please call for info - RRP ~~\$1063,65~~ **\$744,56**
Thick Thrust Washer Kit - V2-15-120 - Bevel - Crankshaft - RRP ~~\$145,30~~ **\$101,71**
Lighten&Balanace Crankshaft - V2-08-120 - Bevel - Crankshaft- RRP ~~\$1425,00~~ **\$997,50**
Complete Lighten&Balanced - V2-08-121 - Bevel - Crankshaft - RRP ~~\$1824,90~~ **\$1277,43**
- Disc Carrier - V2-16-201 - Bevel - Front Wheel / 6-Hole for all Twins - RRP ~~\$225,00~~ **\$157,50**
Disc Carrier - V2-16-202 - Bevel - Rear Wheel / 4-Hole, 280mm for all Twins - RRP ~~\$275,00~~ **\$192,50**
Disc Carrier - V2-16-203 - Bevel - Rear Wheel / 8-Hole, Lockheed 240mm Disc - RRP ~~\$225,00~~ **\$157,50**
Disc Carrier - V2-16-204 - Bevel - Rear Whell / 6-Hole, 280mm Disc for all Twins - RRP ~~\$275,00~~ **\$192,50**
Cush Drive Hub - V2-16-205 - Bevel - Rear Wheel / Hex Head Pattern for all Twins - RRP ~~\$295,00~~ **\$206,50**
Cush Drive Hub - V2-16-206 - Bevel - Rear Wheel / Cap Head Pattern for all Twins - RRP ~~\$295,00~~ **\$206,50**
Sprocket Carrier - V2-16-400 - Bevel/Belt - 5-Hole all Bevel/Pantah/early Belt - RRP ~~\$185,85~~ **\$130,10**
Sprocket Carrier - V2-16-801 - Belt - 5-Hole / Quick Change / single Side Arm 916/996 - RRP ~~\$298,00~~ **\$208,60**
- Exhaust Spanner - V2-21-051 - Bevel - all Twins - RRP ~~\$59,45~~ **\$41,62**
Strobe Tool - V2-21-052/052L - Bevel - Bosch Ignition short / Bosch Ignition long all Twins - RRP ~~\$330,30~~ **\$231,21**
Pickup Setting Tool - V2-21-053 - Bevel - Bosch Ignition, all Twins - RRP ~~\$330,30~~ **\$231,21**
Engine Sprocket Removal Tool Kit - V2-21-100K - Bevel - all Twins - RRP ~~\$165,00~~ **\$115,00**
Measuring Tools - V2-21-201/202 - Bevel/Belt - 2V Opener Shim / 2V Closer Shim - RRP ~~\$9,95~~ **\$6,97**
Degree Wheel - V2-21-203 - Bevel/Belt - for Ignition and Camshaft Timing all 2V & 4V Belt & Testastr. - RRP ~~\$198,20~~ **\$138,74**
Measuring Tools - V2-21-601/602 - Belt - 4V Opener Shim / 4V Closer Shim - RRP ~~\$9,95~~ **\$6,97**
Cam Pulley Adjustment Tool - V2-21-700 - Belt - all 2V & 4V Belt - RRP ~~\$39,65~~ **\$27,76**
- Footrest- V2-30-020 - Bevel - Rigid, 7/16 UNF Mount all Singles & Twins- RRP ~~\$80,00~~ **\$56,00**
Footrest- V2-30-021 - Bevel - Folding, 7/16 UNF Mount all Singles & Twins- RRP ~~\$120,00~~ **\$84,00**
Footrest- V2-30-022 - Bevel - Rigid, 12x1mm Mount with adjustment nut all Twins- RRP ~~\$125,00~~ **\$87,50**

Contact details

Web address: www.veetwo.net

Email: sales@veetwo.net

Ph +61 (0)8 9262 7277

Fx: +61 (0)8 9262 7288

SALE ENDS MAY 31

OR WHILE STOCKS LAST

Price Disclaimer: Prices are correct at the time of printing (E&OE). Vee Two reserves the right to change prices without notice. Prices quoted are ex Vee Two factory, Perth Western Australia and exclude all taxes, duties and freight charges.